

 **JohnsCreek**  
**SymphonyOrchestra**

J. Wayne Baughman | music director



**LOCALLY GROWN**

DISCOVER YOUR SYMPHONY

2019 - 2020 SEASON

# TheCarlandGroup



## LABOR DISCOUNT

# 30% OFF LABOR

Plus tax and any applicable fees. Up to maximum \$75 total discount. Must present coupon at time of write-up. This offer cannot be used on a service or repair that is already discounted. We will charge you the lesser of the two. Speak with an advisor for details.

Every New Vehicle  
is Covered for Life!



Unlimited Miles.  
Unlimited Time.

### SCHEDULE SERVICE TODAY AT THREE CONVENIENT LOCATIONS!



#### AcuraCarland

3403 Satellite Blvd  
Duluth, GA 30096  
[www.AcuraCarland.com](http://www.AcuraCarland.com)



#### HondaCarland

11085 Alpharetta Hwy  
Roswell, GA 30076  
[www.HondaCarland.com](http://www.HondaCarland.com)

#### Carland SERVICE CENTER

11300 State Bridge Road  
Alpharetta, GA 30022  
[www.CarlandService.com](http://www.CarlandService.com)

# MESSAGE FROM THE MAESTRO

Dear Friends,

The 1997 *vision* that became a *plan* is now a 13-year *reality*. Thanks to the artistic excellence of our musicians, the diligent guidance of our board of directors and administration, AND your steadfast support the Johns Creek Symphony Orchestra is proud to present our 2019-2020 Concert Season.

With highlights too numerous to include here, I'll briefly mention a few.

- Return to Newtown Park
- The Crystals (yes, that fabulous 1960's girl group)
- Inaugural "Kids' Christmas" Concert, hosted by CBS 46 news anchor Karyn Greer
- Bevin Hill, soprano (Christmas Gala and Holiday Pops)
- Side-by-side performance with outstanding student musicians of Chattahoochee High School's award-winning music department

As our JCSO season unfolds, the Cultural Arts Alliance at Johns Creek continues to make significant progress toward completion of a comprehensive, multi-discipline cultural arts center. The project, temporarily named the Legacy Center of Johns Creek, will become the home of JCSO, the Johns Creek Arts Center and several other members of the greater Johns Creek arts community.

I am also very happy to announce the naming of JCSO's concertmaster chair as "The Lynn Marie Hosty Baughman Concertmaster Chair." This designation is a tribute to one of metro Atlanta's most devoted and influential teachers of violin, whose 40-year career impacted the lives of hundreds of students of all ages. Her wise counsel was a major factor in the successful launching of our artistic enterprise in 2007.

The JCSO musicians and I look forward to sharing another season of great music with you!

Sincerely,



J. Wayne Baughman

Music Director/Conductor

## THANKS TO OUR 2019-2020 SEASON SPONSORS



**FULTON COUNTY**  
**ARTS & CULTURE**

Funding for this program is  
provided by the Fulton County  
Board of Commissioners.



**EMORY**  
**JOHNS CREEK**  
**HOSPITAL**



**NORTHSIDE**  
**HOSPITAL**

This program is supported in part by Georgia Council for the Arts through the appropriations of the Georgia General Assembly. Georgia Council for the Arts also receives support from its partner agency - the National Endowment for the Arts. This project is supported in part by an award from the National Endowment for the Arts.



FULTON COUNTY AND THE DEPARTMENT OF  
**ARTS & CULTURE**



Fulton County and the Department of Arts & Culture (FCAC) are dedicated to the arts for the passion they inspire, the quality of life they afford us and the economic impact they make. **The mission of the Fulton County Department of Arts and Culture is to insure all citizens' access to the arts.**

FCAC supports and administers arts programming giving Fulton County residents broad access to the arts in the county's 15 municipalities and the unincorporated areas of South Fulton. The 15 member Fulton County Arts Council, appointed by the Board of Commissioners, advises the Board on arts and cultural related policy; each commissioner appoints two members for two-year rotating terms.

Through the work of six community Arts Centers, Contracts for Services arts funding and the Fulton County Public Art Program, FCAC provides broad access to arts programming; including art classes, free performances and grant funding.

Since 1979, the Contracts for Services program has invested approximately \$89 million dollars to the non-profit arts and cultural industry in Fulton County, establishing Fulton County as the leading public funder of the arts in the State of Georgia. Last year Fulton County enriched the lives of over 80,000 residents through Fulton County run arts facilities and more that 4 million residents and visitors through Contracts for Services.

**FCAC STRIVES TO BETTER THE LIVES OF FULTON COUNTY RESIDENTS THROUGH THE ARTS**

Information on our programs are available on our website [www.fultonarts.org](http://www.fultonarts.org)

141 Pryor Street, Suite 2030, Atlanta, GA 30303  
**404-612-5780**



**FULTON COUNTY**  
**arts & culture**



# MEET THE MAESTRO

JCSO Music Director and Conductor J. Wayne Baughman studied choral and orchestral conducting, earning undergraduate and graduate degrees in music education from the University of Alabama, as well as advanced studies in conducting at the University of Michigan.

Upon his arrival in Atlanta in 1974, Maestro Baughman immediately became involved with the Atlanta Symphony Orchestra and Chorus, and for 25 years he was a frequent vocal soloist, chorus member, and rehearsal conductor under the guidance of the late Robert Shaw. Well-known for his oratorio performances as bass soloist, he collaborated with Maestro Shaw on



numerous performance projects, including the Mozart Requiem Mass, J.S. Bach's St. John Passion, and Handel's Messiah. In 1990, as bass soloist, Maestro Baughman shared the honor of a Grammy Award for the Telarc recording of Belshazzar's Feast (Walton) and Chichester Psalms (Bernstein) with Robert Shaw and the ASO.

Maestro Baughman has held numerous academic and church music conducting positions in a career spanning more than 50 years. In addition to his work with the Johns Creek Symphony Orchestra he serves as Vice-President of the Cultural Arts Alliance at Johns Creek and chairs the Legacy Center Task Force.



## Live your *best life.*

*More independent living  
apartment homes opening soon.*

**RESERVE YOURS BEFORE  
THEY ARE GONE!**



**CELEBRATION  
VILLAGE**

Independent Living | Concierge Living | Assisted Living | Memory Care

3000 Celebration Boulevard | Suwanee, GA 30024

**770-886-6565 | CVillage.com**



# Community means everything.



That's why I'm proud to be here to help life go right™ –  
and to support Johns Creek Symphony Orchestra.  
If there's anything you need, call me.

Jay Williams, Agent  
5445 McGinnis Village Place, Suite 101  
Alpharetta, GA 30005  
Bus: 770-410-1818  
[www.talktojay.com](http://www.talktojay.com)



# MEET THE MUSICIANS

## JOHNS CREEK SYMPHONY ORCHESTRA

J. Wayne Baughman, Music Director

### VIOLIN 1

Adelaide Federici,  
Concertmaster  
*The Lynn Marie  
Hosty Baughman  
Chair*  
Pete Ciaschini  
Kevin Chaney  
Sally Gardner-  
Wilson  
Alison James  
Jeanne Johnson  
Angele Lawless  
Patrick Ryan  
Jessica Stinson  
Elonia Varfi  
Rafael Veytsblum

### VIOLIN 2

Tricia Anderson  
Kirsten Browning  
Holly Bryan  
David Edwards  
Heather Hart  
Tramaine Jones  
Elizabeth Lamback  
LuAda Malcom  
Kim Padgett  
Sheri Peck  
Gerome Stewart  
Lee Taylor

### VIOLA

Cindy Beard  
Kate Feltgen  
Rebecca Jones Floyd  
Cheree Mitchem  
Robert Rieve  
Tracy Shealy  
Kristeen Sorrells  
Joli Wu

### CELLO

Harrison Cook  
Roy Harran  
Daniel Holloway  
Sarah Kapps  
Charae Krueger  
Jessica Messere  
Erica Ransbottom

### BASS

Lyn DeRamus  
David Goodwin  
Peter Hildebrandt  
Anna Huthmaker  
Todd Markey  
Miroslav Tubic

### FLUTE/PICCOLO

Nicole Chamberlain  
Kathy Farmer  
Molly Gareau  
Candace Keach  
Judith Klein  
Kelly Via  
Jim Zellers

### OBOE/

### ENGLISH HORN

Pamela Holloway  
Erica Howard  
Kim Lorch  
Rebecca Testerman

### CLARINET/

### BASS CLARINET

Michael Bolick  
Linda Brill  
Staci Culbreth  
David Odom  
Sandy Wade  
John Warren

### BASSOON/

### CONTRABASSOON

Debby Grove  
John Grove  
Carl Nitche  
Kenneth Potsic  
Dan Worley  
Shelly Unger

### HORN

Amy Black  
Alan Brown  
Joshua Crook  
Jay Hanselman  
Michelle Kelley  
David Lamm  
David McCurley

### TRUMPET

Doug Guice  
Patrick McAvoy  
Derrick Montgomery  
Paul Poovey  
Jonathan Swygert  
Yvonne Toll

### TROMBONE/

### BASS TROMBONE

Josh Bynum  
Tom Gibson  
Hollie Lawing  
Ed Nicholson  
Lee Watts  
Jim Wile

### TUBA

Bernard Flythe  
Bill Pritchard  
Brent Vokes

### TIMPANI

Scott Douglas  
Jerry Fields  
John Lawless  
Lisa Morris  
Scott Pollard

### PERCUSSION

Colin Agnew  
Chris Beville  
Jaime Cardenas  
Chris Gravely  
Caleb Herron  
Karen Hunt  
Savanna Lawing  
Joel Morris  
Victor Pons

### HARP

Monica Hargrave  
Julie Koenig  
Nella Rigell

### PIANO

Sara Lorusso  
Deb Terning

### ORGAN

Jeremy Rush

---

### LIBRARIAN

Traci Y. Wood

### PERSONNEL MANAGER

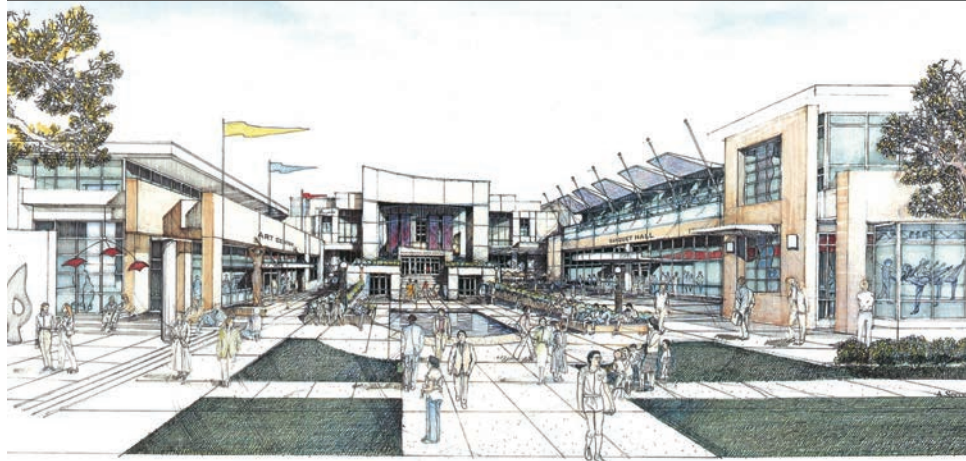
Rebecca Testerman

# THE LEGACY CENTER

OF JOHNS CREEK

VISUAL + PERFORMING + CULTURAL ARTS

"MORE THAN A VENUE"



CONCEPTUAL SKETCH

JOHNS CREEK PERFORMING ARTS CENTER



PREPARED FOR THE ART AND CULTURE BOARD, CITY OF JOHNS CREEK



The Legacy Center of Johns Creek is the proposed multi-discipline cultural arts center being developed to serve the needs of Johns Creek and the north metro Atlanta region.

SCAN FOR INFO



BE A PART OF THE CONVERSATION!

[WWW.JCLEGACY.ORG](http://WWW.JCLEGACY.ORG)

[INFO@LEGACY.ARTSALLIANCEJC.ORG](mailto:INFO@LEGACY.ARTSALLIANCEJC.ORG)

Project is led by the Legacy Center Task Force, a sub-committee of the Cultural Arts Alliance at Johns Creek, Inc.



Major funding for this project is provided by the Fulton County Board of Commissioners.



FULTON COUNTY  
arts & culture



## JOHNS CREEK SYMPHONY ORCHESTRA BOARD OF DIRECTORS

Craig Carter, President

AMERIPRISE FINANCIAL

Douglas Russ, Vice President

PREMIER LOGISTICS PARTNERS, LLC

William Abely, Treasurer

LEAPFROG SERVICES, INC.

Lyman Louis, Secretary

RETIRED, CBS PUBLISHING

J. Wayne Baughman

JCSO MUSIC DIRECTOR

Catherine Abely

COMMUNITY VOLUNTEER

Kevin Brown

SEASONS HOSPICE AND  
PALLIATIVE CARE OF GEORGIA

Ting Chiu

WORLD FINANCIAL GROUP

Marianne de Vargas

THE VARGAS GROUP

Adelaide Federici

JCSO CONCERTMASTER

Angela Harvey

RETIRED EDUCATOR

Peter Hildebrandt

EXECUTIVE LEADER/MENTOR

Vicki Horton

EVERGREEN LOCATION STRATEGIES

Kathleen Klotz

RETIRED NEUROLOGIST

Marilyn Margolis

EMORY JOHNS CREEK HOSPITAL

Karen Robertson-Wall

WELLS FARGO ADVISORS

Diana Weitz

STATE FARM INSURANCE

Richard Loehn

EMERITUS

### ADMINISTRATION

Linda Brill

EXECUTIVE DIRECTOR

Ashley Rausch

MARKETING MANAGER

Chantelle Carter

ADMINISTRATIVE ASSISTANT

11877 Douglas Road, Suite 102-294

Johns Creek, GA 30005

678-748-5802

[www.johnscreeksymphony.org](http://www.johnscreeksymphony.org)

[johnscreeksymphony@gmail.com](mailto:johnscreeksymphony@gmail.com)



### ABOUT THE JOHNS CREEK SYMPHONY ORCHESTRA

Now in its 13<sup>th</sup> season, the Johns Creek Symphony Orchestra is Metro Atlanta's only fully-professional, part-time symphonic orchestra, made up of professional musicians from all over the greater metro Atlanta area.

The mission of the Johns Creek Symphony Orchestra is to enhance the quality of life for Johns Creek and north Metro Atlanta residents through the presentation of high-quality performances, educational and other outreach programs that reflect the cultural diversity of the community.

Your place for

# Entertainment



The City of Johns Creek is proud to be the home of the Johns Creek Symphony Orchestra. Metro Atlanta's only fully-professional, part-time symphonic orchestra, the JCSO has been delighting and entertaining audiences for over ten years. Showcasing expert talent and moving musical compositions, they will remain a cultural staple for many years to come.

**SATURDAY, OCTOBER 5, 2019, 7:00 P.M.**


**MUSIC IN THE PARK**

**A FREE concert at Mark Burkhalter Amphitheater, Newtown Park**

J. Wayne Baughman, conductor  
Timothy J. Aucoin, guest conductor

PRESENTED BY



Washington Post March	John Philip Sousa
Gliding Girl Tango	
 Presidential Polonaise	
Three Old Viennese Dances	Fritz Kreisler
Liebesfreud	
Liebeslied	
Schön Rosmarin	
Overture to <i>La Gazza Ladra</i>	Gioacchino Rossini
<b>~ INTERMISSION ~</b>	
Radetzky March	Johann Strauss, Sr.
Tick Tack Polka	Johann Strauss, Jr.
The Favorite	Scott Joplin
The Entertainer	
Night and Day	Cole Porter
Moonlight Serenade	Glenn Miller
Georgia On My Mind	Hoagy Carmichael
It Had Better be Tonight	Henry Mancini

***Please silence cell phones.  
Use of cameras and recording devices is strictly prohibited.***



Proud supporter  
of the local arts and  
Johns Creek Symphony Orchestra.

Call us for your marketing needs.

**770-442-3278**

Alpharetta-Roswell Herald • Milton Herald • Johns Creek Herald  
Forsyth Herald • Dunwoody Crier • Northside Woman  
Answer Book • NorthFulton.com • Appen Podcast Network



J. Wayne Baughman | music director

**SATURDAY, NOVEMBER 16, 2019, 7:30 P.M.**  
**AN EVENING WITH THE CRYSTALS**

# JCSOPOPS

**Johns Creek United Methodist Church**

Selections by the Johns Creek School of Rock House Band

Daniel Garneau, house band director

Alpha Jewel Valencia, vocals, drums

Ashton Rausch, drums, keys

Connor Smith, bass, saxophone, vocals

Jack Pfahl, guitar, keys

Ky Wilson, guitar, trumpet

Mahi Maulik, vocals

Nick Sternon, bass

Owen Jacobs, guitar

Selections by the Johns Creek Symphony String Quartet

Alison James, 1st violin

Sally Gardner-Wilson, 2nd violin

Cindy Beard, viola

Sarah Kapps, cello

**~ INTERMISSION ~**

The Crystals with members of the Johns Creek Symphony Orchestra

***Please silence cell phones.***  
***Use of cameras and recording devices is strictly prohibited.***

# SCHOOL OF ROCK

School of Rock is Music School reimagined. Our music programs are designed to encourage learning in a supportive environment where students of all skill levels are comfortable and engaged. We take the music school concept to the next level for kids, teens, and adults. Performance is the core of School of Rock's educational approach, and all of our students perform several times a year.

The School of Rock House Band program gives students under 18 the opportunity to join a gigging band composed of fellow musicians from their school. These students are the best of the best from their school and play routinely in front of live audiences. School of Rock students must audition to be in the House Band. Once a member, students gain real music experience associated with gigging musicians and become leaders and mentors inside the School of Rock community.



**JOHNS CREEK**

6335 HOSPITAL PKWY. #200  
JOHNS CREEK, GA 30097



**RESURGENS**  
**ORTHOPAEDICS**  
REACH MORE

## EXPERT PHYSICIANS SPECIALIZING IN:

Trauma Care	Hand Surgery
Sports Medicine	Joint Replacement
Arthroscopic Surgery	Neck & Back Surgery
Shoulder & Elbow Surgery	Foot & Ankle Surgery
Non-Operative Spine Care	General Orthopaedics

**REQUEST AN APPOINTMENT TODAY!**  
**(404) 575-4500** [resurgens.com](http://resurgens.com)



**Hilton**  
**Garden Inn®**

**Atlanta North/Johns Creek**

**11695 Medlock Bridge Road • Johns Creek, Georgia, 30097**

**770-476-1966**

# G



*Grissom Law, LLC*

*Wills & Trusts*  
*Medicaid Asset Protection Planning*  
*Probate*  
*Special Needs Trusts*

678.781.9230  
www.grissomlawfirm.com

*Your Family, Your Wealth, Your Life, Your Goals.....*

*Our Focus*

**J H N S**  
**C R E E K**  
*Arts Center*



Major funding is provided by the Fulton County Board of Commissioners

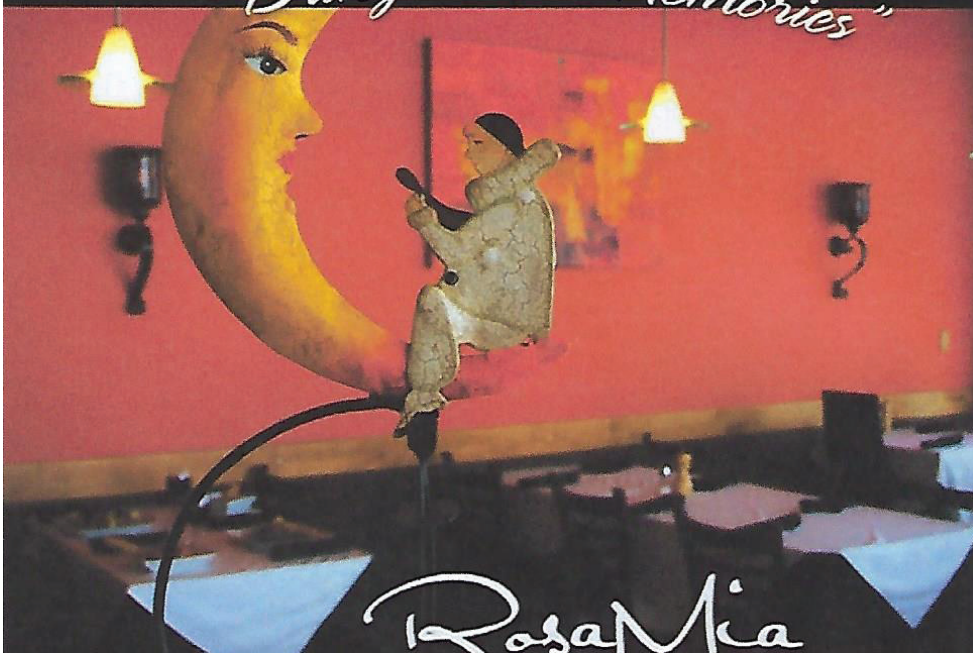
**ALL MEDIA • ALL LEVELS • ALL AGES**

Get creative with the Johns Creek Arts Center and expand your skills in all art media! Our classes, camps, and workshops include ceramics, drawing, painting, photography, jewelry, writing, and sewing. In addition to classes, you can indulge your love for the arts at our free gallery exhibitions and events held throughout the year.



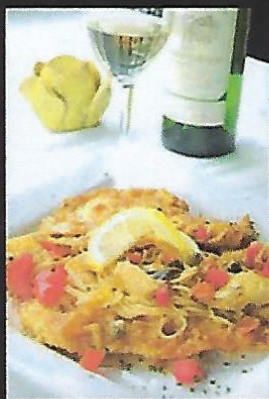
johnscreekarts.org    6290 Abbotts Bridge Road, Bldg. 700 Johns Creek, GA 30097    770-623-8448

*"Our Food Will  
Bring Back Memories"*



Rosa Mia

Ristorante Italiano



Open for lunch and dinner:  
Monday - Saturday  
Live Music Wed., Fri.  
and Sat. nights

Please visit our Website  
for updates, reviews  
and special events  
[RosaMiaItalian.com](http://RosaMiaItalian.com)

FROM ITALY AND NEW YORK TO YOU IN ATLANTA!

11730 Jones Bridge Road, Johns Creek 30005  
770-772-6456

Reservations recommended for dinner | Catering and private parties available  
Call ahead, drive thru, take-out window available



# THE CRYSTALS

When Phil Spector discovered The Crystals, not one was yet out of high school. Their first recording, *There's No Other (Like My Baby)* was also their first hit, which catapulted them straight to the "Apollo" Theatre. They continued their successful recordings with five more TOP TEN records: *Uptown*, *He's A Rebel*, *He's Sure The Boy I Love*, *Da Doo Ron Ron*, and *Then He Kissed Me*. Two of the TOP 50 most popular records in the Rock 'n Roll Hall of Fame belong to The Crystals. The group has scaled from five members to three. The Crystals now consist of Dee Dee Kenniebrew, who was there from the very first recording, Patricia Pritchett-Lewis, and MelSoulTree.



## **DOLORES "DEE DEE" KENNIEBREW**

Dee Dee started singing professionally at age 15 with The Crystals, honing her craft while working and watching acts like Jackie Wilson, Sam Cooke, Dionne Warwick, The Commodores, and many others. Dee Dee went to school with Gregory Hines, Patty Duke, and Bernadette Peters, among other stars. While the original girls left one by one in the 60s for various personal reasons and other pursuits, she has carried on The Crystals all the way into the new millennium.

"I hung in for the fans that have stuck with me through the years – fans whom I promised that as long as they wanted to hear the songs, I would not stop singing them. I appreciate them so much. We've had over 40 years together now! I've managed to acquire a whole lot of new fans during the 70's, 80's and 90's as well, and that.....I just love!"


## **PATRICIA PRITCHETT-LEWIS**

Pat has been blessed with one of the finest gifts of live showmanship seen in a long time. The fact that she acts only enhances her ability. You might see her in an episode of *Law and Order*, *One Life To Live*, *As the World Turns* or *Saturday Night Live*. If you are a patron of the

theater arts you might have seen her in *Invisible Fences* (Staged Reading-Lark Theatre), *Truth* (Staged Screenplay- Inter-borough Repertory Theatre), *Having Our Say*, (Martha's Vineyard Playhouse), *In The Upper Room*, (Symphony Space), *Black Nativity*, *Brown Women Who Fly*, *Henry Street Settlement*) or on the national tour with Theatre works U.S.A. The Crystals are blessed to have her. A truly faithful person, Patricia thanks God for her gifts, her husband, her family, her friends and her fans for their unwavering love and support.

## **MELSOULTREE**

MelSoulTree joined The Crystals in 2002. Although she is affectionately known as the "baby" of the group, she is not new to the entertainment industry. Before joining the legendary Crystals, MelSoulTree toured internationally throughout Germany, France, Switzerland, Argentina, Chile, and Uruguay singing Gospel, R&B, and Jazz. She has been featured as a soloist for the prestigious Duke Ellington and Princeton Orchestras. MelSoulTree was also cast by the Billie Holiday Theatre for the musical *Raisin Hell*, created by Motown legend Smokey Robinson and William "Mickey" Stevenson. MelSoulTree holds a BFA in music from the City College of New York. She is a real showman and a powerhouse!



A symphony of exceptional  
care close to home.

Emory Johns Creek Hospital is proud to  
support the Johns Creek Symphony's  
program, "A Kids' Christmas."

678-474-7000  
[emoryhealthcare.org/johnscreek](http://emoryhealthcare.org/johnscreek)

EMORY  
JOHNS CREEK  
HOSPITAL



The  
Lionheart  
School®  
FOUNDED IN 2000



*Where we see your children with our hearts and address their needs with our minds.*

[www.thelionheartschool.com](http://www.thelionheartschool.com)

**SATURDAY, NOVEMBER 30, 2019, 11:00 A.M.**

**A KIDS' CHRISTMAS**

A SENSORY-FRIENDLY PERFORMANCE

**Johns Creek United Methodist Church**

**J. Wayne Baughman, conductor**

Special Guests:

Karyn Greer, CBS46 News Anchor

Dancers of North Atlanta Dance Theatre

Very Special Guest: Santa Claus

PRESENTED BY

**EMORY**  
**JOHNS CREEK**  
**HOSPITAL**

ADDITIONAL SUPPORT



This concert will be one hour long, with no intermission.

A Christmas Festival	Leroy Anderson
Rudolph the Red-nosed Reindeer	Johnny Marks, arr. Jack Bullock
Sing-along	
Deck the Halls	Traditional
Jingle Bells	James L. Pierpont
A Visit from St. Nicholas ('Twas the Night Before Christmas) Read by Karyn Greer	Clement Clarke Moore
You're a Mean One, Mr. Grinch Sung by J. Wayne Baughman	Albert Hague and Dr. Seuss
Jolly Old St. Nicholas	Emily Miller & John P. McCaskey
March of the Toys Featuring toy soldiers from North Atlanta Dance Theatre	Victor Herbert
Sleigh Ride	Leroy Anderson

***Please silence cell phones.***

***Use of cameras and recording devices is strictly prohibited.***

# KARYN GREER

A long-time Atlanta resident, Karyn is well known in the local television market and has a history of hands-on community involvement. She is the past president of the Atlanta Press Club and currently serves on the Board of Governors for the National Academy of Television, Arts & Sciences as well as a national trustee.



Karyn is the recipient of six Southeast Emmy awards, two awards from the Atlanta Association of Black Journalists, and a Salute to Excellence award from the National Association of Black Journalists. Karyn is a member of the Magnolia chapter of The Links Inc., a charter member of the Greater North Atlanta Chapter of Jack and Jill of America Inc., on the board of Pebble Tossers Inc., and a member of Alpha Kappa Alpha Sorority Inc., to name just a few.

Throughout her career Karyn has been the recipient of numerous awards honoring both her professional work and community contributions. She has consistently been named one of Atlanta's 100 Women of Influence by the Atlanta Business League and she was featured as a powerhouse in Who's Who in Black Atlanta.

Karyn is proud of her work helping thousands of women find their breast cancer early by doing breast-self exams and getting mammograms.

**Johns Creek**  
CHAMBER  
*be the exception*

Join us  
[www.johnscreekchamber.com](http://www.johnscreekchamber.com)

*Betsy Liermann*

*The Healthy Choice in Real Estate*

With Betsy... Conducting your next home **purchase or sale** will be music to your ears

**REALTOR®**

Serving:  
Johns Creek &  
North Metro Atlanta

(770)601-3067  
Betsy.Liermann  
@comcast.net

# Huthmaker Violins

## Atlanta



Eric Lotte  
2009  
Haze, France



Giorgio Grisales  
1998  
Cremona, Italy



Honoré Derazey  
c. 1860  
Mirecourt, France

# Health<sup>1</sup>Care

*healing one at a time*

The first and foremost commitment of our internal medicine practice is to see and engage with each person we care for as a whole person, by getting to know each patient's unique story and offering preventive advice and care, not just after-the-fact treatments and procedures. We are focused on quality medical care, **healing one at a time.**

Read our reviews and make an appointment online at [www.zocdoc.com](http://www.zocdoc.com)

To schedule a consultation and exam with  
Dr. Christopher Kang, Board Certified in Internal Medicine, CALL:

**770-497-4188**

[www.health1care.org](http://www.health1care.org)

10710 Medlock Bridge Rd. Suite 150 • Johns Creek, GA 30097



CHRISTOPHER KANG, MD

#### SCREENING AND DIAGNOSTIC SERVICES:

- Preventive Care Exams
- Hypertension, Diabetes, Hyperlipidemia, Thyroid, GI disorder, Weight screening and management
- Bone Density Measurement
- Pap Smears
- Ultrasounds and Echocardiograms
- Lab Tests (CBC, CMP, Lipid panel, HbA1c, TSH, hormones and neurotransmitters, food allergies, GI wellness panels, micronutrient levels, environmental toxins)
- Vaccinations
- DOT physical examinations
- USCIS Civil Surgeon Immigration examinations
- ECGs, 24 hr Ambulatory Blood Pressure Monitoring, 24 hr Holter Monitoring, Spirometry
- Sleep Studies
- X-Rays

We are a member of the Emory Healthcare Network

# GIVE YOUR FAMILY THE COVERAGE IT DESERVES

- Coverage you can customize to meet your needs
- Homeowners insurance
- Automobile insurance



## Stuart Perry

Your Local Agent  
11550 JONES BRIDGE RD STE 9  
JOHNS CREEK, GA 30022  
[SPERRY@FARMERSAGENT.COM](mailto:SPERRY@FARMERSAGENT.COM)

**Call 404-683-0722 today!**

Smart choices last a lifetime.



Restrictions apply. Discounts may vary. Not available in all states. See your agent for details. Insurance is underwritten by Farmers Insurance Exchange and other affiliated insurance companies. Visit [farmers.com](http://farmers.com) for a complete listing of companies. Not all insurers are authorized to provide insurance in all states. Coverage is not available in all states.



# Johns Creek Symphony Orchestra

J. Wayne Baughman | music director

## SATURDAY, DECEMBER 21, 2019, 7:30 P.M. CHRISTMAS GALA CONCERT

**Johns Creek United Methodist Church**

J. Wayne Baughman, conductor

Johns Creek Chorale; Nathan Frank, artistic director

Bevin Hill, soprano

GUEST ARTIST SPONSOR



A Christmas Festival	Leroy Anderson
O Come, O Come Emmanuel	Plainchant, arr. Julian Wachner
Farandole from L'ARLESIENNE SUITE NO. 2	Georges Bizet
O Holy Night	Adolphe Adam
March of the Toys from BABES IN TOYLAND	Victor Herbert
Joy to the World	G.F. Handel, arr. Julian Wachner

### ~ INTERMISSION ~

A Sentimental Christmas Journey	
The Christmas Song	Mel Tormé, arr. Bob Lowden
Winter Wonderland	Felix Bernard, arr. Calvin Custer
Have Yourself a Merry Little Christmas	Hugh Martin & Ralph Blane arr. John Whitney
See Amid the Winter's Snow	Dan Forrest
Doll Song from TALES OF HOFFMAN	Jacque Offenbach
White Christmas	Irving Berlin
Sleigh Ride	Leroy Anderson
Star Carol	John Rutter

***Please silence cell phones.  
Use of cameras and recording devices is strictly prohibited.***

# WOODWARD NORTH

## CONGRATULATIONS

TO WOODWARD ACADEMY GRADUATE  
BEVIN HILL ON HER PERFORMANCE WITH THE  
JOHNS CREEK SYMPHONY ORCHESTRA THIS SEASON!

BEVIN HILL



## CREATE YOUR PATH

EVERY CHILD'S EDUCATION IS A UNIQUE JOURNEY.  
*At Woodward, we provide the compass.*

Johns Creek  
Pre-K to 6  
404.765.4001

TO SCHEDULE A TOUR, VISIT [WOODWARD.EDU](http://WOODWARD.EDU)



# BEVIN HILL

Soprano Bevin Hill has gained attention as a performer of great charm and charisma in a variety of leading roles.

She launched the 2019 calendar year by performing the world premiere of the aria *Feather on the Wind*, written specifically for Ms. Hill by composer Thomas Ludwig, at the Ludwig Symphony Orchestra's Spring Gala Concert. Later in 2019, in addition to her performance with the JCSO, she will perform Handel's *Messiah* for the first time in her hometown of Atlanta, GA.

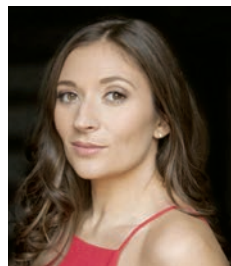
During the 2017–2018 season, Ms. Hill joined Pacific Opera Project's *Lucia di Lammermoor* for her debut in the watermark *bel canto* role of Lucia. Ms. Hill enjoys a strong relationship with Vermont's Opera Company of Middlebury, where she has performed Adina in *L'elisir d'amore*, Papagena in *The Magic Flute*, Nella in *Gianni Schicchi*, Belinda in *Dido and Aeneas*, and Lisette in *La rondine*, a performance which earned her praise for her "comedic timing and glorious voice."

An alumna of young artist residencies with opera companies throughout the United States,

Ms. Hill has performed with Des Moines Metro Opera, Arizona Opera, Opera Saratoga, and Dicapò Opera theatre.

Ms. Hill made her New York City debut as Musetta in *La bohème* with the Martina Arroyo Foundation. She has also performed Giulietta in *I Capuleti e i Montecchi*, Ida in *Die Fledermaus*, and Gretel in *Hansel and Gretel* with New York Lyric Opera at Symphony Space.

Ms. Hill graduated from Woodward Academy and received her Masters degree in Vocal Performance at Manhattan School of Music under the tutelage of acclaimed soprano and director Catherine Malfitano and her Bachelor of Fine Arts degree from Carnegie Mellon University. Ms. Hill was a 2012 District Winner of the Metropolitan Opera National Council Auditions in Georgia and Regional Semifinalist for the Southeast Region.



## Heartland Institute

*Empowering Organizations and Their People  
Through Financial Education*

### WORKPLACE EDUCATION

Providing Financial Wellness Education  
for Employers and their Employees

### COLLEGE PLANNING PREPARATION

Providing Families with  
College Planning Solutions

Ting Chiu, CFEd  
Senior College Consultant and her team  
(404) 333-3864  
[ting.chiu@hife-usa.org](mailto:ting.chiu@hife-usa.org)  
[www.hife-usa.org](http://www.hife-usa.org)

# UNDERSTANDING YOU



RENASANT  
BANK

11655 Medlock Bridge Road  
Johns Creek, Georgia 30097

800.680.1601 | [renasantbank.com](http://renasantbank.com)



# JOHNS CREEK CHORALE

## SOPRANO 1

Sharon Boyd  
Margaret Crawford  
Esra Erkan  
Madeliene Flannigan  
Jen Hooper  
Jennifer Hutcheson  
Carolyn Malone  
Ruth Mantooth  
Cynthia Mare  
Anh Molloy  
Lauri Potter  
Lesley Price  
Jackie Putnam

## SOPRANO 2

Linda Bergmann  
Debra Coulter  
Amanda Fischer  
Annette Freeman  
Meghann Gavin

Anna Mao  
Lori McCandlish  
Nancy Perronie  
Gretchen Saluja  
Marian Schiff  
Lisa Smith  
Mia Sollenberger  
Kristen Van Dyke  
Jodi Wallace

## ALTO 1

Marilyn Altman  
Nancy Eckert  
Jannine Gamache  
Seema Jani  
Juliette Keelan  
Mary Kentos  
Tracy Lane  
Cindy Locker  
Jeanette Luna  
Jennifer Natchus  
Eileen Ponich

Holly Price  
Gina Schmitz  
Tracy Swift  
Erika Szatmary  
Jordan Trotman  
Nancy Turner

## ALTO 2

Laurie Beck  
Cecilia Harrington  
Jennifer Hicks  
Emily Holbrook  
Kathleen Klotz  
Libby Rickett  
Nancy Shields  
Barbara Snellings  
Melanie Strickland  
Katherine Trezise  
Lois White  
Liz Woodring

## TENOR 1

Austin Boyett  
Jeff Cooper  
Anne Hodgskiss  
Tim Jennette  
Steve Mare  
David Massey  
Mark Scott  
Matthew Van Dyke

## TENOR 2

Steve Bing  
Jason Etheridge  
Patrick Hooper  
Adam Trotman  
Michael Vavases  
Bill Woodring

## BARITONE

Allen Baston  
Ryan Brookhart  
Richard Ettenger

Justtyn Hutcheson  
David Jones  
Bernie Keelan  
Richard Loehn  
Dale McGowan  
Mark Salcedo  
Kurt Tesh

## BASS

Ben Assaf  
Eric Ayers  
Steve Dorough  
Dave Greene  
Viktor Slavov  
Joel Terning  
Thomas Trezise  
Ferrell White

## The Johns Creek Chorale 2019 - 2020 Season



### The Road Not Taken

October 19, 2019, 7:00 p.m.

October 20, 2019, 3:00 p.m.



### Joy, Joy, Joy

December 15, 2019, 3:00 p.m.

### JCSO Christmas Gala

December 21, 2019, 7:30 p.m.

### Carmina Burana

Including The Georgia Tech Chorus & The Atlanta Wind Symphony

March 8, 2020, 3:00 p.m.

### The Music Man

~Concert Version~

April 26, 2020, 3:00 p.m.

For Locations and Ticket Information: [www.thejohnscreekchorale.com](http://www.thejohnscreekchorale.com)

# NATHAN FRANK

Dr. Nathan Frank hails from Humble, Texas, and has a varied career as a conductor, educator and singer. As a singer of both operatic and the musical theater genres, he has been heralded as a “heroic tenor with rock star appeal.”

As an educator, Nathan has held teaching positions at Southern Methodist University, University of North Texas, Southeastern Oklahoma State University, Pacific Lutheran University, LaGrange College, Reinhardt University, and Georgia Tech.

Currently, he serves as Director of Worship and Fine Arts at Johns Creek United Methodist Church leading a music ministry of over 200 musicians. In addition to his church work, Nathan is the founding Artistic Director of The Johns Creek Chorale, Tapestry Women’s Choir, and the all professional Choral Pickup. He actively serves as a choral clinician and has given numerous workshops on applying Bel Canto vocal techniques to the choral palette.

While not teaching, Nathan enjoys spending time with his family, playing golf, and tennis.

## musik21

PIANO

VOICE

GUITAR

VIOLIN

VIOLA

CELLO



We offer Competitions, Royal Schools of Music, National Federation, National Music Teachers Association, Summer Classes in France, Spain, Poland with concerts and master classes and Summer Camps.

10700 State Bridge Rd.  
Johns Creek, GA 30022  
404 245 6133  
info@musik.com  
www.musik21.org

No matter where it needs to go,

# we'll get it there.

[www.PLPllogistics.com](http://www.PLPllogistics.com)



**Inc.**  
**5000**

**PLP**  
LOGISTICS

INC 5000 Honoree for 4th YEAR- No. 86 in GA!!

9810A Medlock Bridge Rd, Ste 100 Johns Creek, GA 30097 | (678) 921-8181

**SUPPORTED BY THE  
TRANSAMERICA  
FOUNDATION**



TRANSAMERICA®



Johns Creek  
Symphony Orchestra

J. Wayne Baughman | music director

**SATURDAY, MARCH 28, 2020, 7:30 P.M.**  
**A NIGHT IN RUSSIA**

With student musicians from Chattahoochee High School Fine Arts Department  
Johns Creek United Methodist Church

**Conductors**

J. Wayne Baughman  
Lori Buonamici, CHS Orchestra Director  
Nicholas Garofalo, CHS Director of Bands

PRESENTED BY



TRANSAMERICA®

Sunrise from ALSO SPRACH ZARATHUSTRA	Richard Strauss
Polovetsian Dances from PRINCE IGOR	Alexander Borodin
Fantasy on Serbian Themes	Nicolai Rimski-Korsakov
Night on Bald Mountain	Modest Mussorgsky, arr. Rimsky-Korsakov
The Great Gate of Kiev from PICTURES AT AN EXHIBITION	Modest Mussorgsky

**~ INTERMISSION ~**

Symphony No. 2, “Little Russian” <i>Andante sostenuto – allegro comodo</i> <i>Andante marziale, quasi moderato</i> <i>Scherzo. Allegro molto vivace</i> <i>Finale. Moderato assai – allegro vivace</i>	Piotr I. Tchaikovsky
--	----------------------

**Please silence cell phones.**  
**Use of cameras and recording devices is strictly prohibited.**

# GUEST CONDUCTORS

## LORI BUONAMICI

Lori Buonamici was born and raised in Upstate New York. Her passion for music began as she listened to her music teacher parents talk about their jobs. Music was everywhere and everyone wanted to be a part of it, so they all played guitar, piano, sang, and performed classical instruments.

Ms. Buonamici earned a Bachelor of Music Education from Crane School of Music at SUNY Potsdam and a Master's degree in Viola Performance and Music Theory from Colorado State University. She then moved to Cali, Colombia, to play in La Orquesta Sinfonia del Valle, where she honed her violin and viola performance skills. She returned to the U.S. and worked on a PhD at the University of Connecticut. However, she missed teaching, so she moved to Georgia to teach at her favorite school ever, Chattahoochee High School.

Ms. Buonamici is the Fine Arts Department Chair at Chattahoochee High School, where she teaches Orchestra, AP Music Theory, and Guitar Class. She and her daughters, Sophia (18) and Summer (16), reside in Johns Creek.

## NICHOLAS GAROFALO

Originally from the Metro-Boston area, Nicholas A. Garofalo completed his Bachelor of Music Education at the University of Tennessee, Chattanooga. Mr. Garofalo has arranged, adjudicated and instructed many high school, middle school and clinician based ensembles throughout his career. After graduating from The University of Tennessee, Chattanooga, he became the director of bands at Chattahoochee High School.

Mr. Garofalo is a currently a member of Phi Mu Alpha Sinfonia, Georgia Music Educators Association, Winter Guard International, Member at Large for the Southern Association for the Performing Arts and The Music Educators National Convention. He is a percussion and music ensemble adjudicator through the United States Scholastic Band Association and is also a Vic Firth Educational Team Member.

During his free time, Nicholas enjoys working on cars and taking day trips with his wife, Stephanie, and dog, Buford.

## Dr. Eric A. Johnson D.D.S.

*Family & Cosmetic Dentistry*

[info@ejohnsondds.com](mailto:info@ejohnsondds.com)

770-663-3436



*Our office accepts most major insurance plans and we will file your insurance claims for you!*

*We look forward to meeting you!*

[www.ejohnsondds.com](http://www.ejohnsondds.com)



Our staff has over 75 years of combined dental experience and is committed to providing you with a comfortable and easy dental visit. Our office was built with the patient in mind. We utilize state-of-the-art equipment, the finest dental products, and a sterilization center that is unparalleled for its safety and efficiency.

3990 Old Milton Parkway, Suite 1 • Alpharetta, GA 30005



beau vinci  
VIOLINS

[beauvinciviolins.com](http://beauvinciviolins.com)

678.691.2394



STEINWAY & SONS  
SPIRIO

STEINWAY & SONS' MOST significant PRODUCT INNOVATION IN  
OVER 70 YEARS, PROVIDING AN UNRIVALED MUSICAL experience  
FOR SKILLED PIANISTS AND AVID LISTENERS ALIKE.

STEINWAY  
Piano Galleries

[www.steinwaypianogalleries.com](http://www.steinwaypianogalleries.com)

STEINWAY PROMENADE  
5950 NORTH POINT PARKWAY, ALPHARETTA, GA 30022  
(770) 777-1300



CAMBRIDGE

ACADEMY OF MUSIC AND ARTS

*Quality Music Instruction  
in Atlanta Area Since 1999*

The Academy's goal is to increase the enjoyment of music, encourage musical excellence and provide rewarding experiences for its students, which will build a lifelong love of the arts.

All teachers associated with the Academy are degreed, qualified and experienced specialists who focus on the nurturing of each student.



Approved  
Music Exam  
Center

Johns Creek Location  
(678) 957-1100

Chamblee Location  
(770) 938-1902

[www.cambridge-music.com](http://www.cambridge-music.com)

# City BARBECUE<sup>®</sup>

**JOHNS CREEK**

4210 Johns Creek Pkwy

770.284.3115

[www.citybbq.com](http://www.citybbq.com)



First time in?

Download the app

**GET \$5 OFF!**



**BIG FROG<sup>®</sup>**  
**CUSTOM T-SHIRTS & MORE**

**Johns Creek, Georgia**

**678-842-3764**

**JOHNSCREEK@BIGFROG.COM**

**DTG | EMBROIDERY | SCREEN PRINTING**

**NO MINIMUMS | NO ARTWORK FEES**



# CHATTAHOOCHEE MUSICIANS

## CHATTAHOOCHEE HIGH SCHOOL SYMPHONY ORCHESTRA

Lori Buonamici and Nicholas Garofalo, Directors

### VIOLIN

James Chang  
Nivedita Chellam  
Isaac Chen  
Sarah Chen  
Yoon Ji Cho  
Samuel Choi  
Crystal Dai  
Sophia Gomez  
Sophia Ho  
Esther Kim  
Yoonseo Kwon  
Seoyeon (Ashley) La  
Daniel H Lee  
Sangwon  
(Ansey) Lee  
Jonathan Mo  
Natasha Mohanty  
Allen Pan  
Logan Purdum  
Tarun Shyamkumar  
Bree Stabler  
Erin Suh  
Zachry Tseng  
Farhan Valummel  
Anastasiya  
Viryaskina  
Dana Yu

### VIOLA

Rebecca Alvarez  
Sallie Kim  
Abigail Lee  
Joshua Lee  
Alison Yau  
Peter Yi

### CELLO

Paris Dinan  
Adiva Dutta  
Ishan Kulkarni  
Harrison Le  
Seong-Won  
(Daniel) Lee  
Jason Luo  
Ryan Moon  
Joshua Oh  
Maya Ridenour

### BASS

Daniela Leonardo  
Vamsi Veerapaneni

### FLUTE

Maia Chen  
Veronica Del Castillo  
Theo Elvebak  
Christopher Jeong  
Heesoo Jeong  
Emilie S. Lin  
Jaehun Seo

### OBOE

Manas Choure  
Ziv Shani Wahba  
Rebeckah L Sullins

### CLARINET

Georgia S. Ames  
Hallie E. Brill  
Tyler H. Cho  
Joyce Hang  
Madison A. Melnyk  
Hannah Oh  
Noah E. Pappo  
Jeffrey D. Xu

### BASS CLARINET

Agha Yusuf A. Khan  
Ethan Kwon  
Noam Shani Wahba

### BASSOON

Julia Fort  
Rahul Komatineni  
Erin M. Menezes

### ALTO SAXOPHONE

Saahas Anandan  
Joseph Garcia  
Murphy Haber

### TENOR SAXOPHONE

Thomas W.  
Jeyakumar  
Aidan M. Spaid

### BARITONE SAXOPHONE

Sydney Harmon

### FRENCH HORN

Luigi Cedeno  
Aner Gendellman  
Rahul Natraj  
Brett D. Reynolds

### TRUMPET

Levi G. Cleaveland  
Ethan A. Cooper  
Hanah Hwang  
Noah F. Newsome  
William R. Phillips  
Sequoyeth A.  
Simpson  
Uddhav Swami

### TROMBONE

Devrim A. Abaci  
Remzi B. Abaci  
Razvan P. Beldeanu

### EUPHONIUM

Natalie A. Snelson  
Leland R. Whitlock

### TUBA

Gabriel M. Betts

### PERCUSSION

Amelfa R. Bleyl  
Grace Donley  
Christian  
Elliot-Haynes  
Jonah Haber  
Carson S. Robertson  
Malloy J. Sparling  
Maayown Sundar



Bow & Instrument Sales, Repairs & Rentals  
387 South Atlanta St. / Roswell, GA 30075  
[www.atlantaviolins.com](http://www.atlantaviolins.com) (770)642-8111



# DONORS

The Johns Creek Symphony Orchestra gratefully acknowledges the generous financial support of the following:

## PLATINUM BATON \$15,000 AND ABOVE

Fulton County Board of Commissioners  
Georgia Council for the Arts  
National Endowment for the Arts

## CONDUCTOR'S CIRCLE \$10,000 - \$14,999

City of Johns Creek  
Transamerica Foundation

## ORCHESTRA CIRCLE \$5,000 - \$9,999

Emory Johns Creek Hospital  
Kinder Morgan Foundation

## BENEFACTOR \$2,000 - \$4,999

Craig and Chantelle Carter  
Kathleen Klotz  
Linda Mauldin  
Northside Hospital  
Renasant Bank

## PATRON \$1,000 - \$1,999

Scott and Jennifer Braynard  
Ting Chiu  
Kent and Susan Davies  
Kathleen Hoenig and Walter Van Winkle  
Premier Logistics Partners LLC – Doug Russ  
Rose Rigdon  
State Farm Insurance

## DONOR \$500 - \$999

Eric and Linda Brill  
Joan Compton  
Constellation – An Exelon Company  
Culver's of Johns Creek  
First Citizens Bank  
Render and Laura Freeman  
Rebecca Hales  
Vicki Horton  
Nancy Moses  
Karen Robertson-Wall  
Stuart Perry Agency, Farmers Insurance

## SUPPORTER \$250 - \$499

William and Catherine Abely  
J. Wayne Baughman

Tim and Cindy Beard  
Mary Boyle  
Kevin Brown  
David and Marianne de Vargas  
Cleve Gaddis  
Paul and Sue Haggerty  
Angela Harvey  
Lyman and Virginia Louis  
Dennis McLynn  
Monte Nichols

## FRIEND \$100 - \$249

City Barbeque  
Michael and Gerri Dunne  
Dianne Fahring  
Martha Fellers  
Thor Grondal  
Robert and Barbara Hunter  
Angelika Kausche  
Janet Levy  
Richard Loehn  
Marshall and Anh Molloy  
John and Cecilia Pierce  
Pablo and Muriel Pittaluga  
Robert Schwerzel  
Six Bridges Brewing (Gridley Brewing LLC)  
Russell Streur  
John Tanzola  
Jeff Tindle  
Transformational Coaching LLC  
Linda Walker  
Michael Willman

CONTINUED ON PAGE 37



# WILLIAM PU MUSIC ACADEMY

330 Prospect Place • Alpharetta, GA 30005

[wpmusicacademy.com](http://wpmusicacademy.com)

William Pu Music Academy is a premium, conservatory-like music academy which offers private lessons on all classical music instruments, and group lessons on music theory, chamber music and Suzuki program. Our professional and friendly faculty help our students not only thrive musically, but also inspire our students to reach their highest potentials.



**CONTINUED FROM PAGE 35**

**CONTRIBUTOR**

**UP TO \$99**

Gaudelia Baltazar  
 Marcia Barasia  
 Edna Betancourth  
 Lee Brooks  
 Brenda Brown  
 Michael C  
 Mary Campbell  
 Michael and June Casey  
 Bowen Chen  
 Katherine Conway  
 Beverly Flournoy  
 Jacquelyn Hill  
 Lisa Johns  
 Marion Kaple  
 Amy Kirouac  
 Karen Klinkman  
 Barbara Jo Koehnemann  
 Lillian Lanauze  
 Merle Land  
 Lucille Levitt

Janet Levy  
 Scott Madgey  
 Beverly Malachowski  
 Jackie Mason  
 Carunguli Natarajan  
 Cynthia Nese  
 Richard Pool  
 Jerrell Riley  
 James Robinson  
 Chantal Scantlebury  
 M. Simpkins  
 Kim Slater  
 Joan Tammetta  
 Rebecca Testerman  
 Linda Walker  
 Barbara Watkins  
 Susan Wiggins  
 Beverly Williams  
 Michael Willman  
 Joy Zager  
 John Zilavy

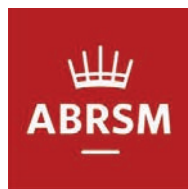
**IN-KIND DONATIONS**

Appen Media Group  
 Big Frog Custom T-shirts  
 City Barbeque  
 Culver's Johns Creek  
 Davis and Langford CPA  
 Emory Johns Creek  
 Hospital  
 Hilton Johns Creek  
 Johns Creek United  
 Methodist Church  
 The Lionheart School  
 Rosa Mia Ristorante  
 Italiano  
 Weitz Event Photography  
 Whole Foods Johns Creek  
 Workplace Solutions Inc.

This list reflects donations received September 12, 2018 - September 12, 2019. Please alert us to any errors or omissions.



## Inspiring Musical Achievements



We support music making, teaching and learning through our world-leading assessments, qualification and resources worldwide since 1889.

Exams and assessments in our graded exam system and diploma program are offered for piano, singing, orchestra and band instruments, and the written theory exam. Over 650,000 students in 93 countries test themselves every year against our internationally recognized standards. There are currently 22 exam centers in the U.S. ABRSM Georgia Exam Center was established in 1996.

In partnership with the Royal Schools of Music in UK:



For more information  
 Contact  
 Margaret Liu  
 ABRSM Representative  
 Georgia USA  
 (678) 523-6703  
 abrsmga@gmail.com

[www.abrsm.org](http://www.abrsm.org)





# Read It Again Bookstore

- Trade in your used books for store credit!
- Book Clubs
- Author Events
- Storytime
- Cute Gifts
- Game Night
- School Discounts
- Newly Expanded
- Fun Customer Service

(We love our job!)

770-232-9331  
 3630 Peachtree Parkway  
 Suwanee GA 30024  
[www.read-it-again.com](http://www.read-it-again.com)



# WEITZ

e v e n t  
PHOTOGRAPHY



[weitzphoto@gmail.com](mailto:weitzphoto@gmail.com)



Instagram  
@weitzphoto



# CHOPIN SOCIETY OF ATLANTA

*Devoted to promoting Fryderyk Chopin's music and advancing the understanding and appreciation of his legacy while engaging and inspiring youth from the Metro Atlanta area.*

**Sunday, Oct. 27, 2019, 6 PM**  
*Sergi Babyan, Piano Recital*  
*Sandy Springs Performing Arts Center*

**Sunday, Feb. 1, 2020, 6 PM**  
*An Evening With Chopin*  
*Gala and Dancing, Buckhead Club*

**Sunday, March 15, 2020, 6 PM**  
*Piano Recital, Dina Yoffe*  
*Roswell Cultural Arts Center*

Dorota Lato, President  
11700 State Bridge Road  
Suite 12  
Johns Creek, GA 30022  
[info@chopinatlanta.org](mailto:info@chopinatlanta.org)  
404.245.6133  
[www.chopinatlanta.org](http://www.chopinatlanta.org)



**COMMUNITY  
WOMEN'S  
CANCER  
GALA**



Learn more at:  
[builttobeatcancer.com](http://builttobeatcancer.com)

**NORTHSIDE  
HOSPITAL**  
CANCER INSTITUTE

**BUILT TO BEAT CANCER**

# D DAVIS & LANGFORD CPA

Proud supporter of the **Johns Creek  
Symphony Orchestra** since 2011!

**Davis & Langford CPA** orchestrates financial success! Our ensemble of **Big 4 trained** CPA's compose plans to make your corporate or personal tax liability diminuendo. We harmonize with accurate **bookkeeping**, thorough **payroll** solutions, and strategic **tax** compliance.

Visit our website and sign up for our **free monthly newsletter** to stay on beat with IRS changes.

**P** (678) 889-9548 | **F** (866) 814-4581

[www.JohnsCreekCPA.com](http://www.JohnsCreekCPA.com)

# 55 is the new 35

At EVOQ Town Flats, we've designed the perfect luxury community for mature professionals on the go. We've thought of everything, so all you have to think about is what to do with all of your free time.



Self-Serve Beer & Wine Taproom  
Heated Saltwater Pool  
Covered Pavilion w/ Televisions  
Peloton Bikes  
On-Demand Fitness  
Green Egg / Grilling Stations  
Fully-Equipped Pet Spa  
Concierge Staff

23 unique floor plans to choose from  
Ceilings up to 11 feet\*  
Separate his & hers vanities\*  
Balconies on every flat  
Choice of design packages  
5-burner Gas Range  
46-bottle wine refrigerator\*  
Porcelain Tiled Bathroom Floors

*\* In select residences*



[www.evoqliving.com](http://www.evoqliving.com)

# EVOQ

TOWN FLATS

## 770-464-5334

55+  

10970 Bell Road Johns Creek, GA 30097